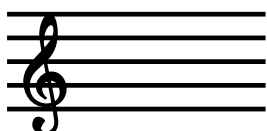


Primer Level - Comprehensive Piano Test 2

1. This set of lines is called the _____ .
2. This is known as the _____ clef. It is usually played by the _____ hand.
3. These numbers are the _____ signature. This tells you that there are 4 _____ per _____ .
4. True or False This tells you how fast to play the piece.
5. This is called a _____ note. It has _____ beat(s).
6. Is this line called a margin line or a ledger line? What note is this? _____
7. This is called a _____ note. It has _____ beat(s).
8. What interval is this? _____
9. What interval is this? _____
10. This is known as the _____ clef. It is usually played by the _____ hand.
11. This is called a _____ note. It has _____ beat(s).
12. Is this a slur or a tie? What do you do when you see it? _____
13. This is called a _____ note. It has _____ beat(s).
14. This is called a _____ .
15. Is this a slur or a tie? What do you do when you see it? _____
16. What does this sign mean? _____

17. Write an F.
(2 points)



18. Write a D.
(2 points)

